

Stifle with Tarsal Cuff Fitting

Please view this fitting video:
<https://vimeo.com/album/1604074>



1. Place tarsal cuff on front of metatarsals, resting on top of **metatarsal heads**.



2. While holding the cuff against the leg with a firm grip; fasten the bottom strap snug and then the next strap up.



3. Holding the brace just below the hinges, push the brace onto the knee;



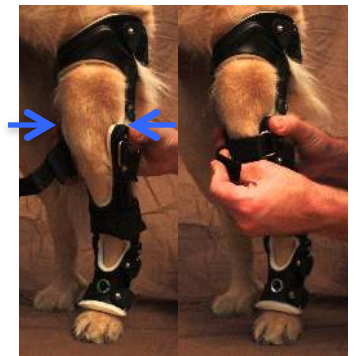
4. Fasten wrap around strap next. Snug, but not too tight.



5. **Push** brace onto knee as far as possible. In that position, fasten calf strap tight.



6. Push femoral shell onto thigh. In that position, fasten femoral strap tight.



7. At the knee hinges, **squeeze** the brace inwards. Holding in that position, fasten front strap snug.

